

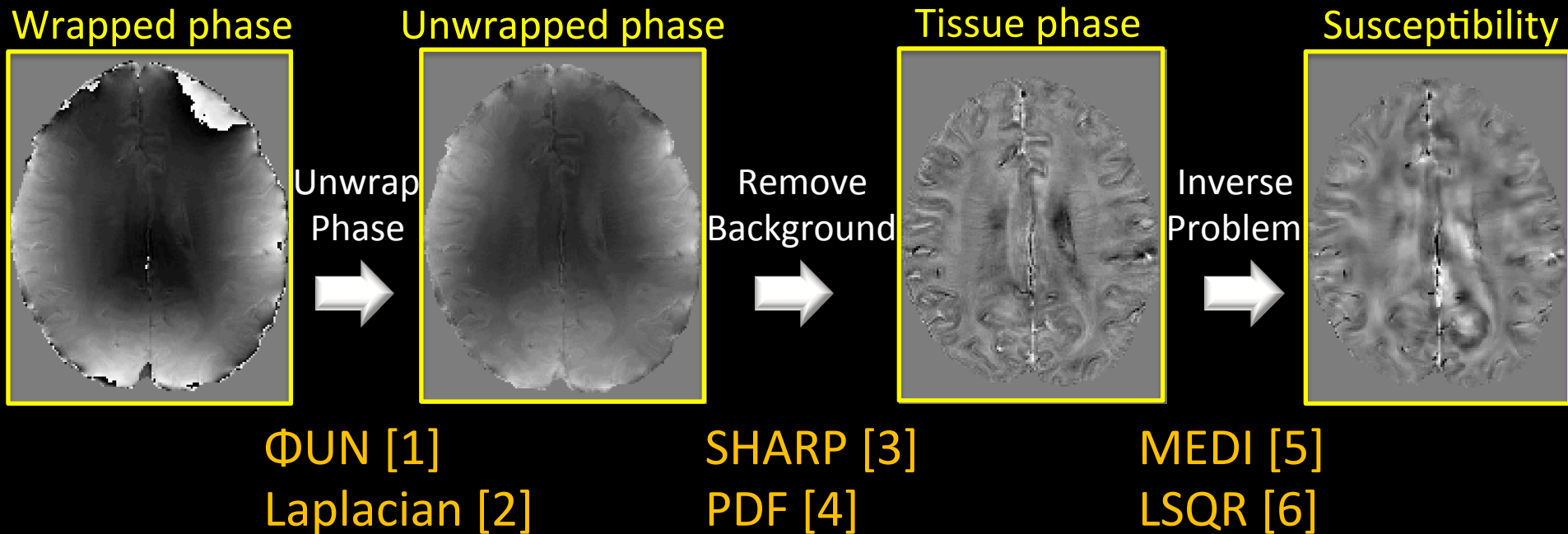


Single-Step QSM with Fast Reconstruction

B Bilgic, C Langkammer, LL Wald, K Setsompop

Martinos Center for Biomedical Imaging, Charlestown, MA

QSM Processing Pipeline



[1] S Witoszynskij, Med Img Analysis'09
[2] W Li, NIMG'11

[3] F Schweser, NIMG'11
[4] T Liu, NRM in Biomed'11

[5] L De Rochefort, MRM'10
[6] W Li, NIMG'11

QSM Processing Pipeline

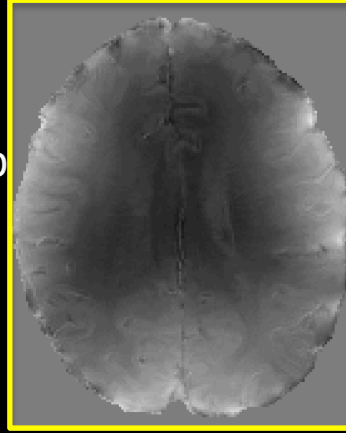
Wrapped phase



Unwrap
Phase



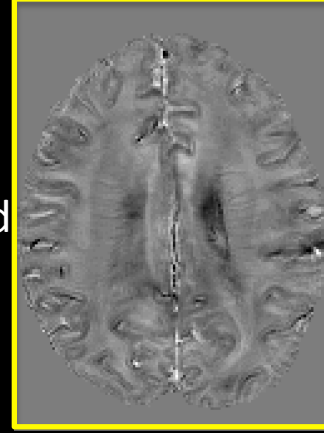
Unwrapped phase



Remove
Background



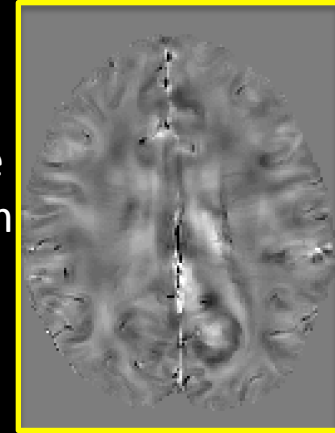
Tissue phase



Inverse
Problem



Susceptibility



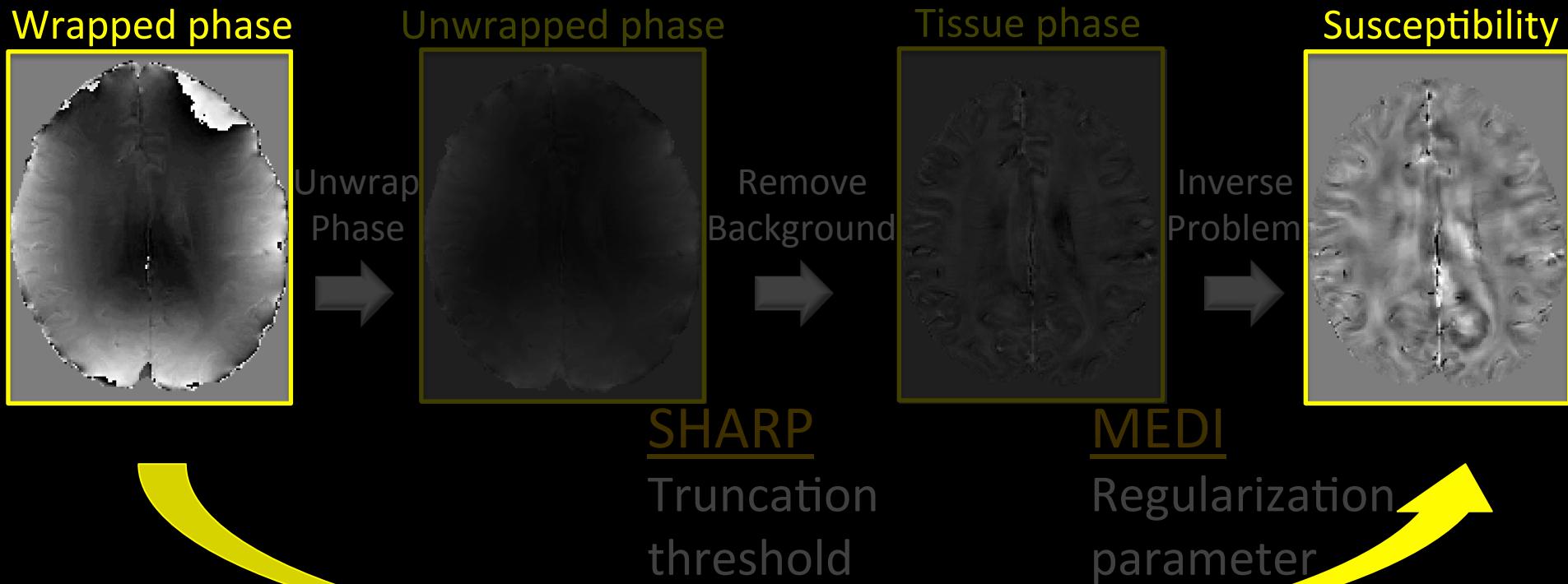
SHARP

Truncation
threshold

MEDI

Regularization
parameter

QSM Processing Pipeline



Single-Step QSM [1-3]

Only one parameter

- [1] K Bredies, ISMRM'14
- [2] T Liu, ISMRM'14
- [3] S Sharma, ISMRM'14

Single-Step QSM with Fast Recon

Wrapped phase

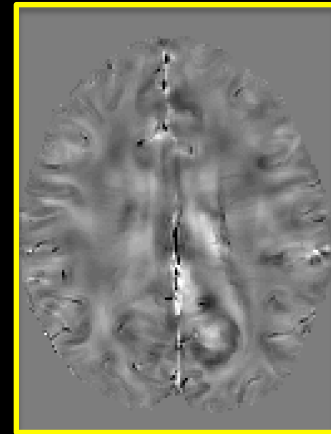


Single-Step QSM

Only one parameter



Susceptibility



Our contributions:

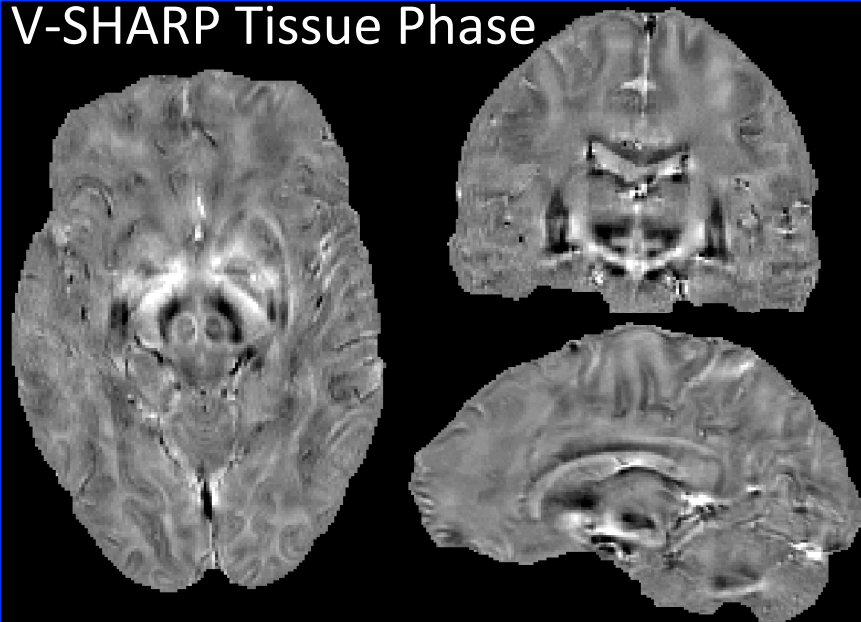
- Fast recon using Preconditioned Conjugate Gradient (PCG)
- Variable size SHARP kernels to reduce loss of cortical phase
- Better mitigation of dipole artifacts than our L2 solver [1]
- Rapid data acquisition using 3D-EPI [2] and Wave-CAIPI [3]

[1] B Bilgic, MRM'13

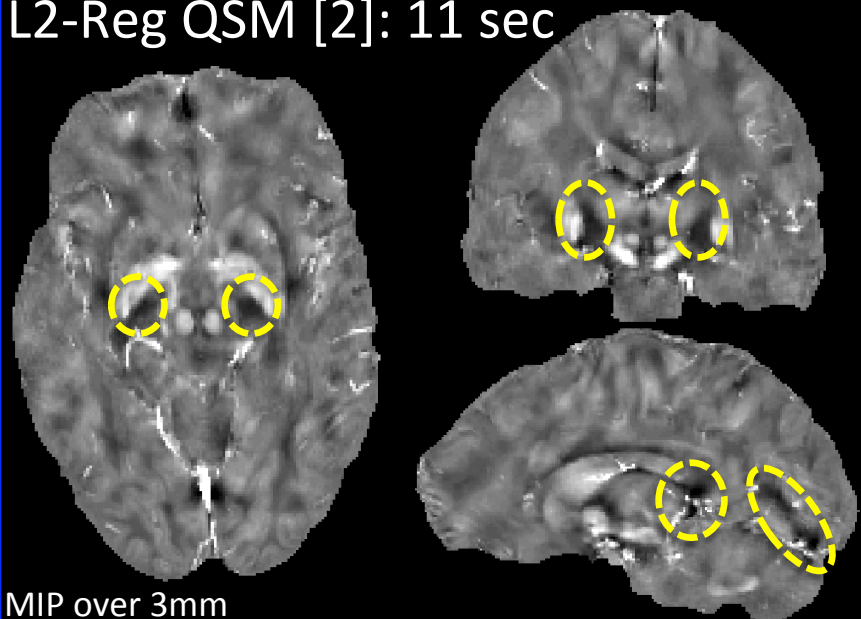
[2] B Poser, NIMG'10

[3] B Bilgic, MRM'14

V-SHARP Tissue Phase



L2-Reg QSM [2]: 11 sec

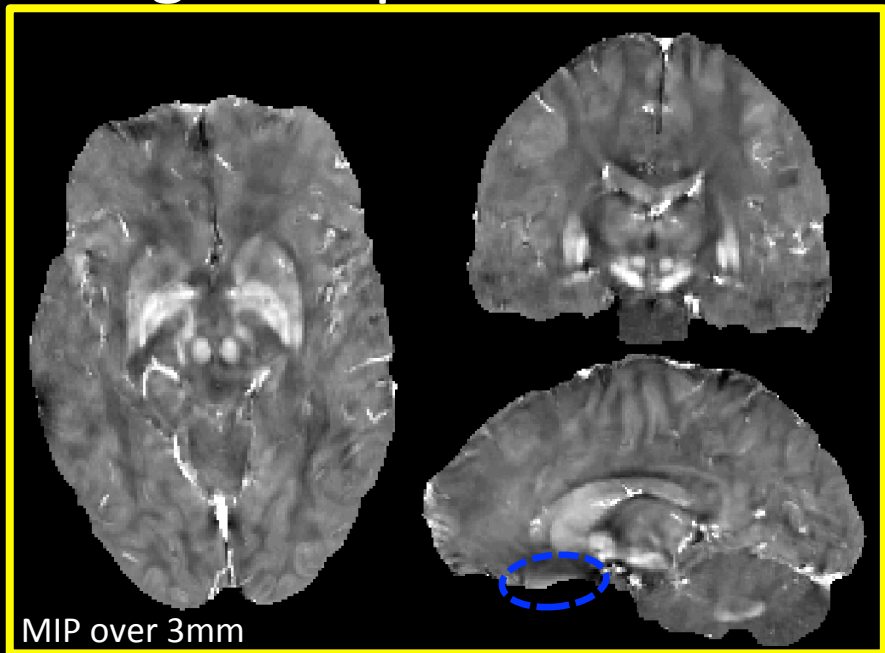


3D-EPI [1]

1mm iso @ 3 Tesla

$T_{acq} = 1min$

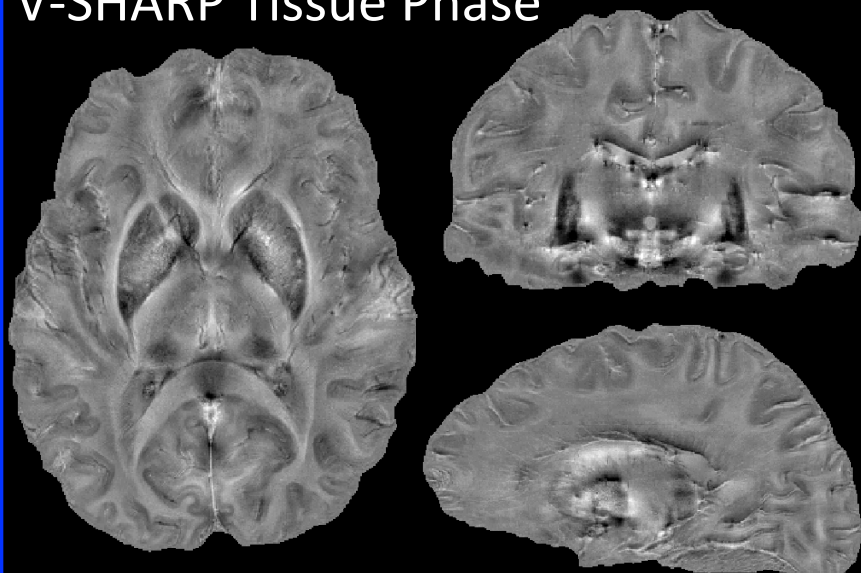
Single-Step QSM: 40 sec



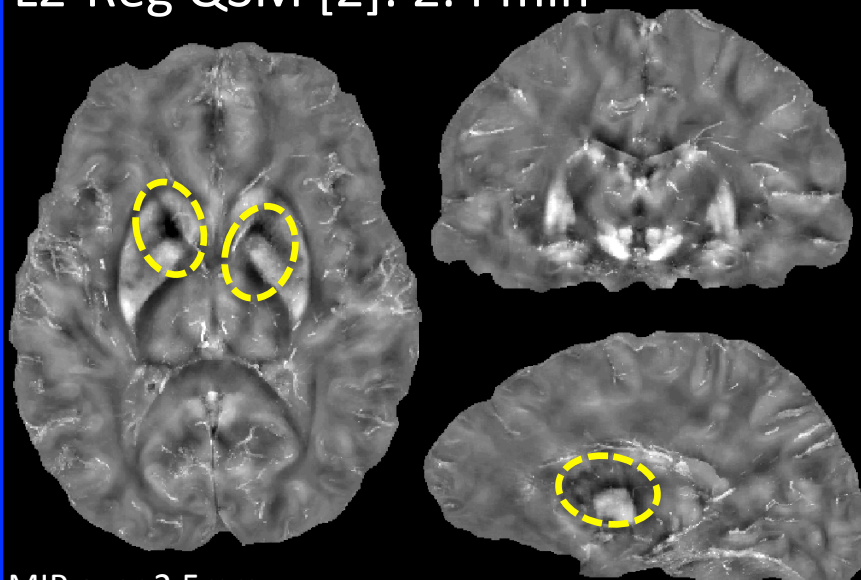
[1] B Poser, NIMG'10

[2] B Bilgic, MRM'13

V-SHARP Tissue Phase



L2-Reg QSM [2]: 2.4 min



MIP over 2.5mm

Wave-CAIPI 3D-GRE [1]

0.5mm iso @ 7 Tesla

$T_{acq} = 5min$

Single-Step QSM: 7.8 min



MIP over 2.5mm

[1] B Bilgic, MRM'14

[2] B Bilgic, MRM'13